

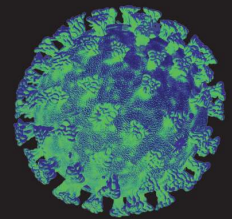


Coronavirus

Isolate your household

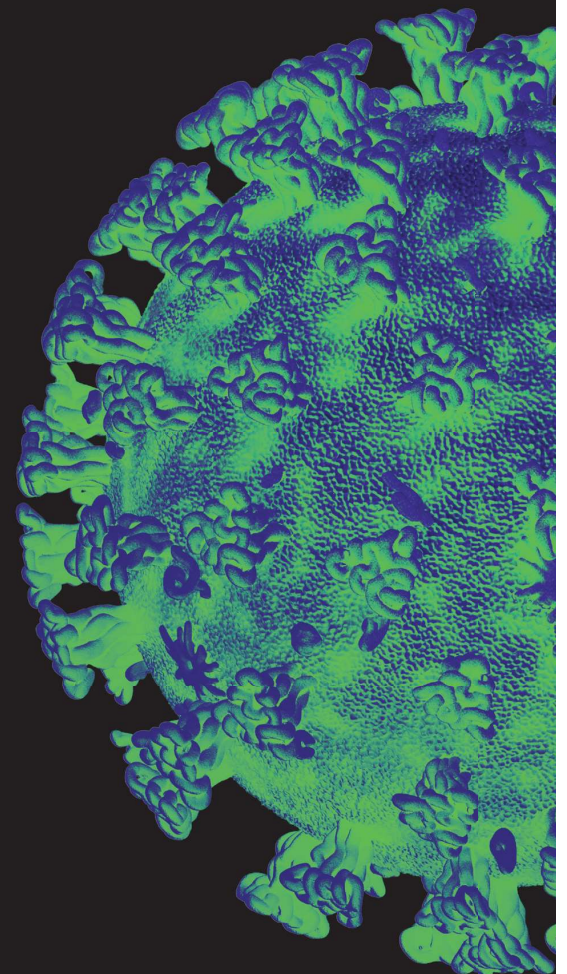
Stay at home

If you or anyone in your household has a high temperature or a new and continuous cough – even if it's mild



- ✔ **Everyone in your household must stay at home** for 14 days and keep away from others.
- ✘ **DO NOT** go to your GP, hospital or pharmacy.
- ✔ **Go to NHS.UK** to check your symptoms and follow the specialist medical advice. Only call NHS 111 if you can't get online or your symptoms worsen.
- ✔ **Protect** older people and those with existing health conditions by avoiding contact.

Find out how to isolate your household at nhs.uk/coronavirus



CORONAVIRUS

**PROTECT
YOURSELF
OTHERS &
THE NHS**